

R.I.G. TABLE

Wood fibre boards and glass



Rudimentary Interior Geometry

The R.I.G. Table is designed from the idea of joining simple principles; optimized use of materials, enhanced functionality and a minimalist expression.

By using well known construction techniques, we have created a series of furniture with an absolute generic appearance, that would allow the structure and the materials to perform as the ultimate leading characteristics.

PRODUCT

Design: R.I.G. Modules
Type: Small dining and study table

DESIGN

Designer: Mikal Harrsen & Adam Hall
Year: 2012

MANUFACTURING

All components
produced in Italy and EU

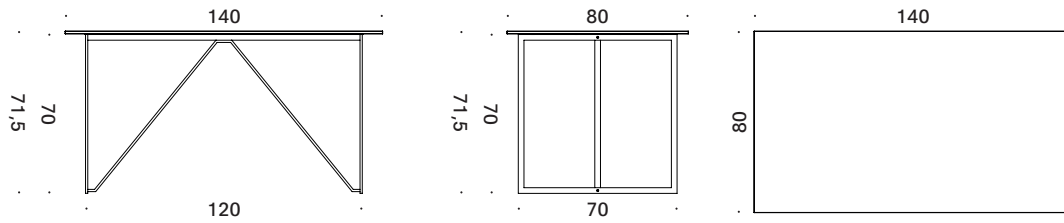
MA / U
Studios

R.I.G. TABLE MEASURES

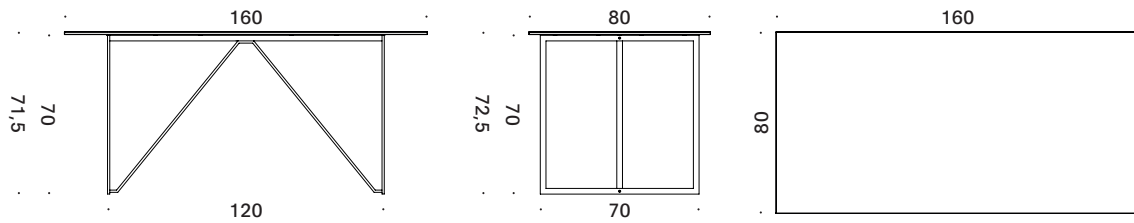
STANDARD MEASURES

Measurements in cm

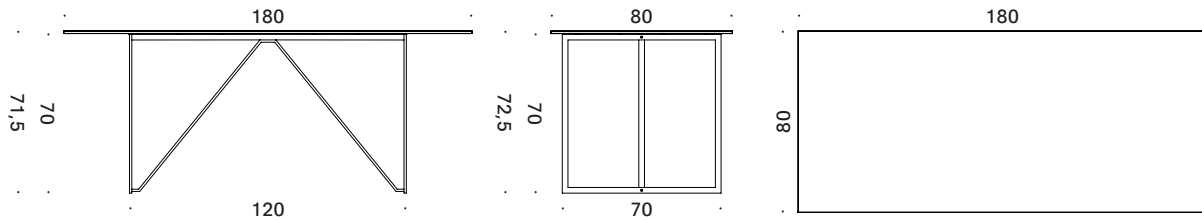
R.I.G. Table
140 × W80 × H72,5



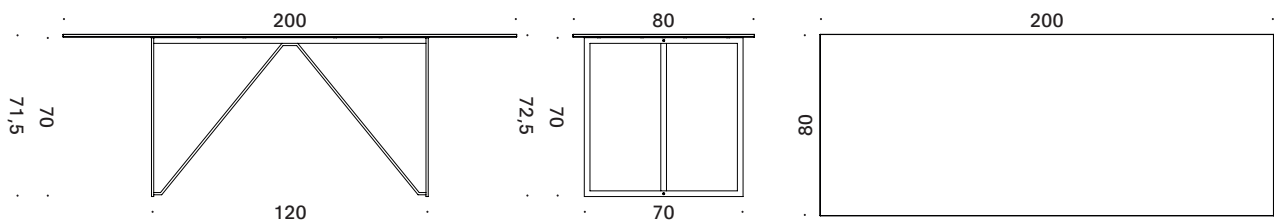
R.I.G. Table
160 × W80 × H72,5



R.I.G. Table
180 × W80 × H72,5



R.I.G. Table
200 × W80 × H72,5



R.I.G. TABLE

MATERIALS AND COLOURS

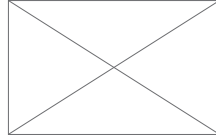
FRAMES



SOLID STEEL PROFILE
Matt black structure
powder coat finish
RAL 9005



SOLID STEEL PROFILE
Brushed brass coating.
On request.



Other colours
on request.

WOOD FIBRE BOARDS AND CORIAN



19 mm black CDF wood
fibre board with oil.



Black CDF wood fibre
board. Black edge
and oak veneer.

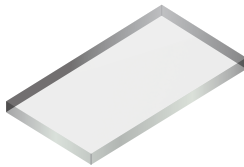


Black CDF wood fibre
board with smoked oak
veneer, open
CDF edge.

NB

*Wood surfaces are treated
with transparent open-pore
acrylic paint, unless
otherwise stated.*

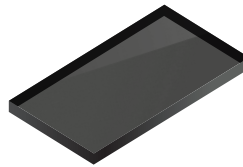
GLASS



15 mm extra clear glass,
clear polished edge.
On request.



12 mm black glass,
matt polished edge.
On request.



16 mm smoked glass,
matt polished edge.
On request.

MA/U
Studio