

# R.I.G. MODULES

## Single sided gables



### Rudimentary Interior Geometry

The R.I.G. Modules shelving system is designed from the idea of joining simple principles; optimized use of materials, enhanced functionality and a minimalist expression.

Only a handful of components, that connects in numerous ways, all attached by using the universal screw; “R.I.G. joint”, creates this diverse shelving system. An uncompromised choice of materials and the graphic stabilizing system ensures a stunning stability.

---

#### PRODUCT

Design: R.I.G. Modules  
Type: Modular shelving system

#### DESIGN

Designer: Mikal Harrsen  
Year: 2012

#### MANUFACTURING

All components  
produced in Italy and EU

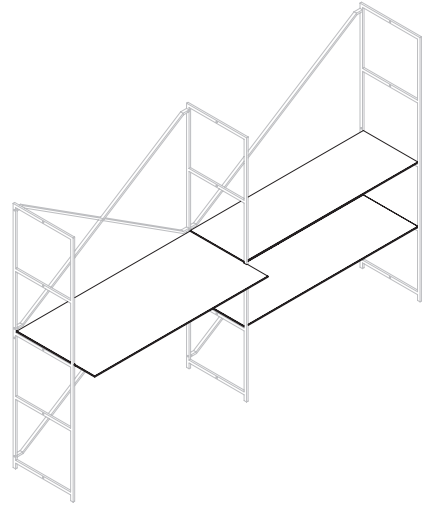
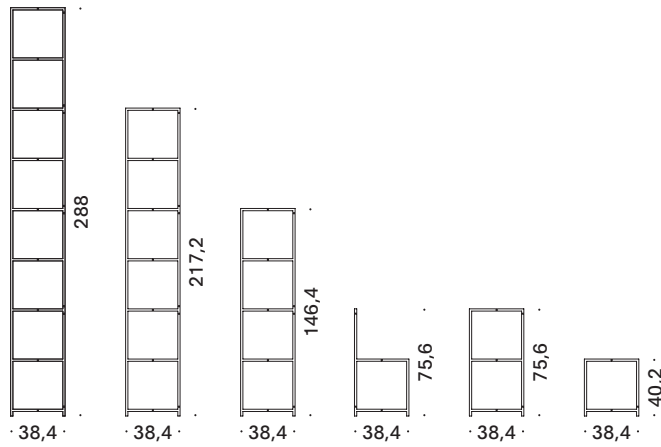
---

**MA/U**  
*Studios*

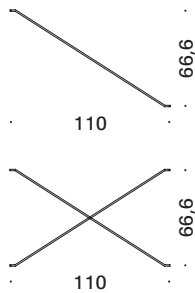
# R.I.G. MODULES – SINGLE SIDED GABLES MEASURES

STANDARD MEASURES FOR SINGLE GABLES

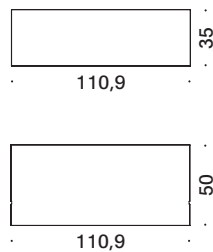
Measurements in cm



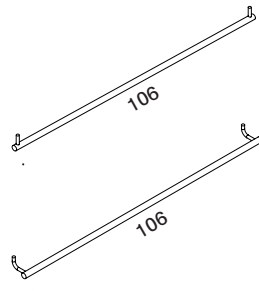
## SINGLE AND DOUBLE STABILIZER



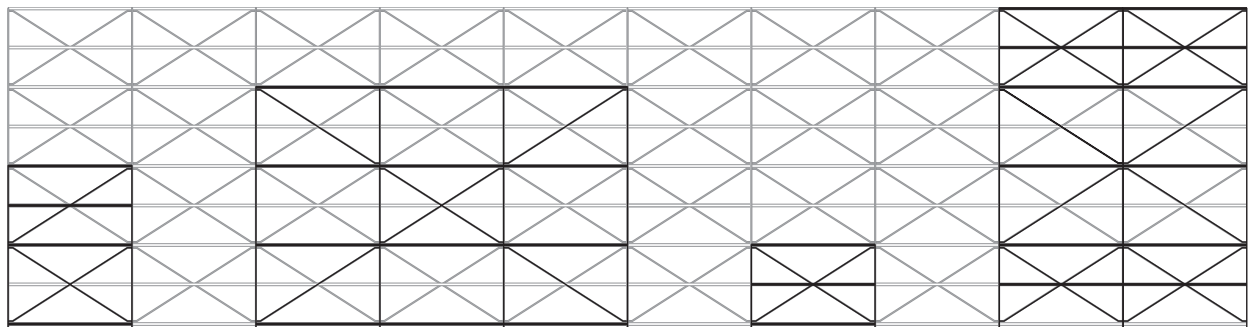
## SHELF AND DESK INSERT



## TOWEL RAIL AND HANGER RAIL



## CONFIGURATION EXAMPLES



Single and cross stabilizers can be combined in numerous ways, designing patterns matching the desired expression. Stabilizers should be installed in at least every second possible position.

# R.I.G. MODULES – SINGLE SIDED GABLES

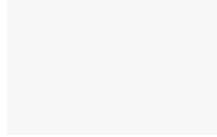
## MATERIALS AND COLOURS

### GABLES

---



SOLID STEEL PROFILE  
Matt black structure  
powder coat finish  
RAL 9005



SOLID STEEL PROFILE  
Matt white structure  
powder coat finish  
RAL 9016



SOLID STEEL PROFILE  
Brushed brass coating.  
On request.

### WOOD FIBRE BOARDS, LAMINATES AND VENEER

---



Black CDF wood fibre  
board with oil.



MDF with white PU  
structure coat.



Black CDF wood fibre  
board. Black edge  
and oak veneer.



Black CDF wood fibre  
board with smoked oak  
veneer, open  
CDF edge.



Natural oak.  
On request.



Smoked oak.  
On request.



Dinesen Douglas, with lye  
treatment. On request.

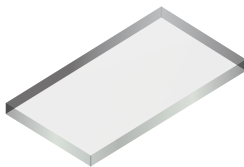
#### **NB**

*Wood surfaces are treated  
with transparent open-pore  
acrylic paint, unless  
otherwise stated.*

---

### GLASS AND STONE

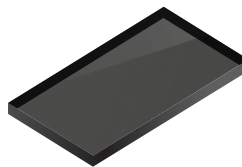
---



Extra clear glass,  
clear polished edge.



Black glass, matt  
polished edge.



Smoked glass, matt  
polished edge.



12 mm CDF wood  
fibre board with  
8 mm Greystone.



12 mm CDF wood  
fibre board with 8 mm  
Carrara marble.