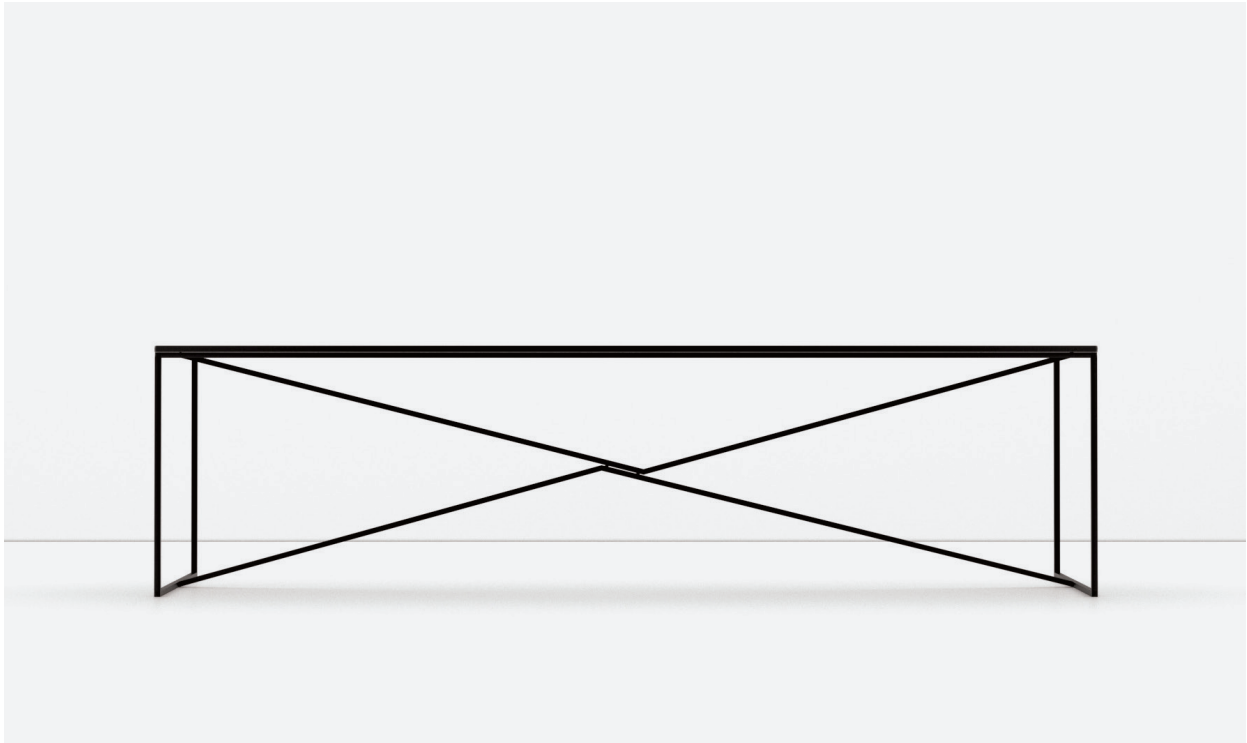


T.T.A. TABLE

Wood fibre boards, veneer and Corian



Tribute to Albers

The main motivation behind the sketches of the T.T.A. Table was to create a solution for a new table frame, based on an entirely generic structure.

Studies on Josef Albers – especially the optical experiments inspired the graphic expression.

PRODUCT

Design: T.T.A. Table
Type: Conference and dining table

DESIGN

Designer: Mikal Harrsen
Year: 2012

MANUFACTURING

All components
produced in Italy and EU

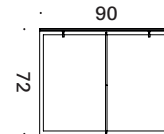
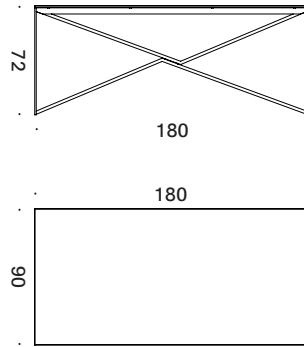
MA / U
Studio

T.T.A. TABLE MEASURES

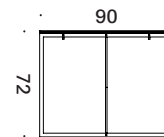
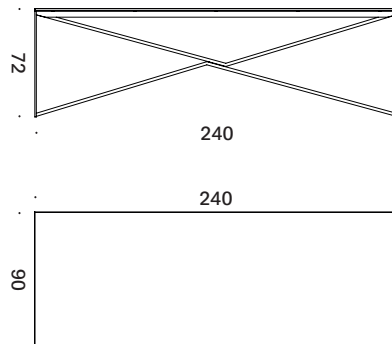
STANDARD MEASURES

Measurements in cm

T.T.A. Table
L180 × W90 × H72



T.T.A. Table
L240 × W90 × H72



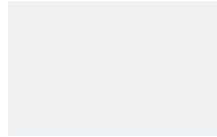
T.T.A. TABLE

MATERIALS AND COLOURS

FRAMES



SOLID STEEL PROFILE
Matt black structure
powder coat finish
RAL 9005



SOLID STEEL PROFILE
Matt white structure
powder coat finish
RAL 9016



SOLID STEEL PROFILE
Brushed brass coating.
On request.

WOOD FIBRE BOARDS AND VENEERS



19 mm black CDF wood
fibre board with oil,
open CDF edge.



19 mm black CDF wood
fibre board with oak
veneer finish, open
CDF edge.

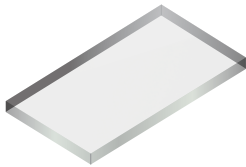


19 mm black CDF wood
fibre board with smoked
oak veneer, open
CDF edge.

NB

*Wood surfaces are treated
with transparent open-pore
acrylic paint, unless
otherwise stated.*

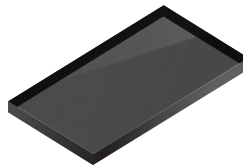
GLASS AND CORIAN



15 mm extra clear glass,
clear polished edge.



12 mm black glass,
matt polished edge.



16 mm smoked glass,
matt polished edge.



12 mm white corian.